



Summary Of Company Profile .....	3
Overview Of Services.....	5
Man Guarding Security Services.....	5
Electronic Security Solutions & CCTV .....	6
Access Control System.....	7
Burglar Alarm System .....	8
Electric Fence System .....	9
Risk Management Consulting.....	10
Journey Management .....	11
Vehicle Configurations .....	11
Training Services.....	12
Provision Of Police/Mopol Services For Static Guarding .....	13
Journey Management Costing.....	13
Outsourced Drivers.....	18
Tracking & Telematics .....	18
Advanced Generator Monitoring And Control.....	19
Rocco S4 Alarm Security System .....	20
Fire Security Systems.....	20
Crime Prevention And Environmental Design Advisory.....	21
Event And Special Project Security.....	22
PR24 National Footprint.....	23
Client Base .....	25
Board Of Directors .....	26
Technical Partners .....	27

**SUMMARY OF COMPANY PROFILE**

<b>NAME</b>	<b>PR24 NIGERIA LIMITED</b>
<b>VISION</b>	To be the foremost and preferred specialist provider of professional security services and solutions in Africa.
<b>MISSION</b>	To provide smart solutions and hearty service to our clientele, consistently supporting their pursuit of value while growing our business and winning with the right people.
<b>CORE VALUE</b>	<ul style="list-style-type: none"> <li>• Passion</li> <li>• Accountability</li> <li>• Relationship</li> <li>• Integrity</li> <li>• Service Excellence</li> </ul>
<b>OBJECTIVES</b>	<ul style="list-style-type: none"> <li>• Meet/exceed customer expectations</li> <li>• Benefit our shareholders</li> <li>• Realize the potential of our people</li> <li>• Safeguard asset integrity</li> <li>• Sustain a robust management system</li> </ul>
<b>GUARD FORCE MISSION STATEMENT</b>	We are focused on the continual improvement of our performance in service delivery.
<b>OUR STRENGTH &amp; PRIDE</b>	<ul style="list-style-type: none"> <li>• Multi-skilled responders tailored to the unique needs of each of our clients.</li> <li>• Analyzing client vulnerabilities and follow-up with recommendations, from the installation of appropriate security equipment to the deployment of the correct team and complementary processes.</li> <li>• Committed to providing superior customer service.</li> <li>• Sustaining a robust quality management system.</li> </ul>
<b>ADDRESS</b>	<ul style="list-style-type: none"> <li>• 6, Olatunde Ayoola Avenue, Obanikoro, Lagos.</li> <li>• No 6, 23 Crescent C close, Efaab estate, Life camp, Abuja.</li> <li>• 7 Mobutu Road Post Office Junction High-Cost Narayi Kaduna State</li> <li>• 38 Bama Road New GRA Maiduguri Borno state.</li> <li>• KM 5 East-West Road Portharcourt River State.</li> <li>• His Grace Shopping Complex Fatimo Bus stop Opposite Our Lady of Apostle Secondary School Odo-Ona Apata Ibadan</li> </ul> <a href="http://www.pr24security.com">www.pr24security.com</a>
<b>CONTACT PERSON</b>	<b>ONYEKACHI ADEKOYA</b> 08028774774 <a href="mailto:info@pr24nigeria.com">info@pr24nigeria.com</a> <a href="mailto:oadekoya@pr24nigeria.com">oadekoya@pr24nigeria.com</a>
<b>YEAR OF INCORPORATION</b>	2010
<b>OWNERSHIP</b>	Nigerian
<b>REGISTRATION NUMBER</b>	RC No.869536
<b>PRIVATE GUARD LICENSE NO</b>	NSCDC/PG/016/000797

<b>TAX IDENTIFICATION NUMBER</b>	14312632-0001
<b>NATURE OF BUSINESS</b>	Risk Management & Security Advisory, Private Investigation and Background Checks, Journey Management, Security Training, Electronic Security & CCTV, Crime Prevention Through & Environmental Design Advisory, Manned Guarding & Outsourcing services, Event & Special Project Security.
<b>CLIENTELE</b>	Our experience and expertise extend across a broad range of Multinational; NGOs, Oil and Gas Sector, Industrial, Hospitality, Government MDAs- Ministries, Construction, Worship centers, Healthcare, Property Management, Transportation, and Retail.
<b>BOARD OF DIRECTORS</b>	Lanre Olusola- <b>Chairman</b> Peter Okoloh – <b>Executive Vice Chairman</b> Onyekachi Adekoya- <b>Managing Director</b> Innocent Oseghe – <b>NED</b> Ademola Oyerinde - <b>NED</b> Dr. Abayomi Ajayi - <b>INED</b> Isaac Orolugbagbe FCA - <b>INED</b>
<b>SECURITY EQUIPMENT</b>	Guard tour monitoring device, Handradio, CUG, Hand scanner, etc.
<b>WORK DESCRIPTION</b>	Parameter Patrols, Access and Regress Management and Control, Asset Protection, Parking Management, Building/Facilities Guarding Management, Key management, Reception duties, Inventory Control, Fire and Safety, intelligence gathering, Escort of Personnel and Valuables
<b>BENEFITS OF CHOOSING PR24 NIGERIA LTD</b>	<ul style="list-style-type: none"> <li>• Outstanding Client Care Service</li> <li>• Zero tolerance for non-performance</li> <li>• Secured Facility with Zero Crime record</li> <li>• Superior Prime Performance</li> <li>• 100% compliance with site-specific standard operating procedures (SOPs), Post orders, and job description.</li> </ul>

## OVERVIEW OF SERVICES



### MAN GUARDING SECURITY SERVICES

In this ever-changing world, security is at the forefront. At **PR24** we recognize the challenges of providing security changes from country to country, region to region, and location to location. Security needs are global but yet can be very personal and unique.

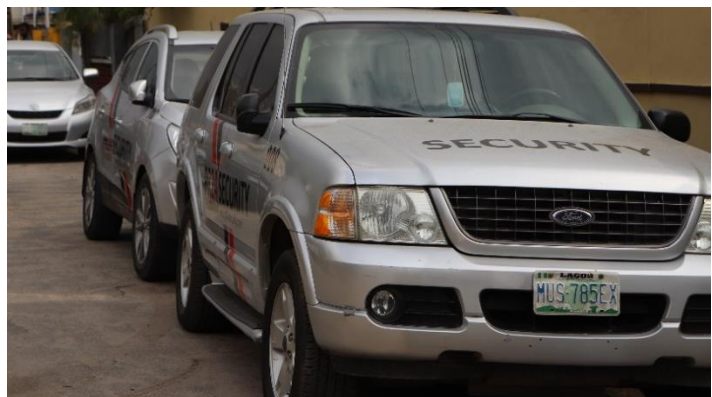
Our security services are always based on a comprehensive analysis of the client's requirements. They include corporate and uniform guards and corporate event bouncers all of whom have been trained to support you in your pursuit of value. They are not just providing security services, but partners towards achieving your goals.

We may integrate static, mobile, and technological security elements into our customized solutions. Your individualized security plan will be based on the analysis of your needs and vulnerabilities. Your plan will include recommendations on security equipment and security personnel and in some cases even information security programs and training.

Our man guarding services are covered both by professional liability insurance and employer's liability. They are not charged for uniforms or maintenance of uniforms.

Our Guarding Security services focus on:

- ✓ Parameter Patrols
- ✓ Access and Regress Management and Control
- ✓ Asset Protection
- ✓ Parking Management
- ✓ Building/Facilities Guarding Management
- ✓ Key Management



## ELECTRONIC SECURITY SOLUTIONS & CCTV

**PR24 Nigeria Limited** leverages the latest technological innovations to support our security guards in the field. Guards are connected and monitored in real-time through our high-tech operations centers. This means it's possible to escalate incidents as soon as they happen and respond to them immediately. Operators in our control centers support operations 24/7/365 and constantly monitor to assist employees and clients during emergencies

**PR24** Electronics solutions products and related services are completely available and customizable to suit the specific site or client needs. They are further supported by the in-depth site and security analysis before and after installation.

Closed Circuit Television (CCTV) systems are security systems used for surveillance and observation of events in certain areas.

Throughout the world, Closed Circuit Television surveillance and observation are now a way of life for many people, whether the systems are at the workplace, on motorways, in shopping centers, banks, or at sports venues.

Evidence produced by CCTV systems of incidents is being accepted in law courts in many countries. With this expense in the use of CCTV, the quality of the information provided by CCTV is critical.

Our design is a modular CCTV system that takes the utmost advantage of recent advancements in camera resolution, central monitoring, touch screen control, and other recent technologies in professional surveillance developed by **renowned** systems manufacturers with an established reputation for high products amongst corporate CCTV users in the world. We have strong affiliations with Bosch, HIK Vision, Axis, Mobotix, etc.

Whether the requirement is for city surveillance, airport, corporate or home environment **PR24** will deliver bespoke CCTV systems that are guaranteed to meet your needs. We provide wide-ranging options for remote monitoring



## ACCESS CONTROL SYSTEM

### Introduction to Access Control Systems:

Simply defined, the term "access control" describes any technique used to control passage into or out of any area. The standard lock that uses a brass key may be thought of as a simple form of an "access control system".

Over the years, access control systems have become more and more sophisticated. Today, the term "access control system" most often refers to a computer-based, electronic card access control system. The electronic card access control system uses a special "access card", rather than a brass key, to permit access into the secured area.

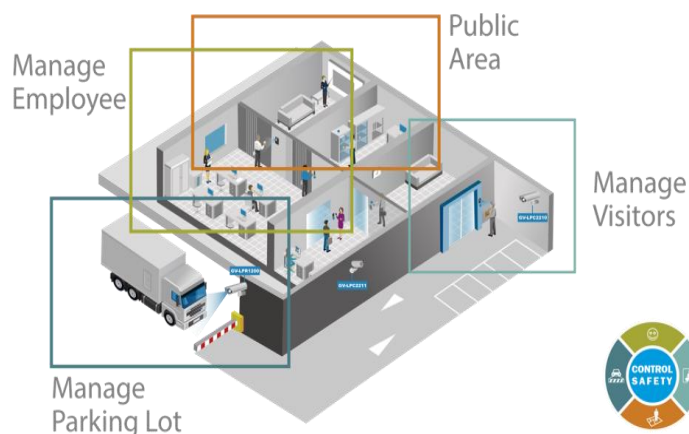
When used within this document, the term "access control system" refers to an electronic card access control system.

Access control systems are most commonly used to control entry into exterior doors of buildings. Access control systems may also be used to control access into certain areas located within the interior of buildings.

The purpose of an access control system is to provide quick, convenient access to those persons who are authorized, while at the same time, restricting access to unauthorized people.

A standard Access Control system is multi-functional and extra intelligent as it can achieve several security objectives in the deployed facility:

1. Time and Attendance - Employee management
2. Manage visitors. Integrated to video door phone and biometric system
3. Manage public area
4. Manage parking lots with vehicle barriers integrated into it

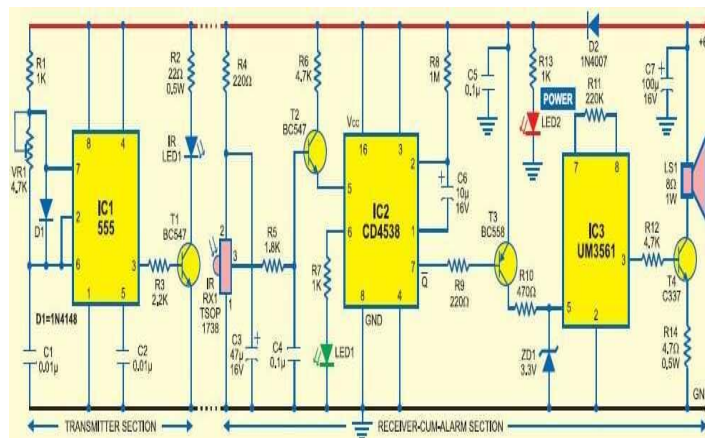


## BURGLAR ALARM SYSTEM

The burglar alarm system circuit uses an infrared proximity detector that triggers an alarm when the rays falling on its sensor are interrupted. It is different from other burglar alarm systems because is a very simple DIY project and can offer you great satisfaction.

The circuit of the IR burglar alarm system comprises a transmitter and receiver-cum-alarm sections. It works off 6V DC, 500mA uninterrupted supply, and uses low-cost readily-available electronic components. LED2 is used for indicating power-on.

## Burglar Alarm Circuit Diagram





## ELECTRIC FENCE SYSTEM

Building a fence requires a combination of quality materials, use of proper construction techniques, and some elbow grease. No two fencing jobs will be the same.

In **PR24**, we go through the basic steps you need to take to successfully construct your electric fence, including:

- Fence charger installation
- Ground rod installation
- Fence post installation
- Fence wire installation
- Placement of fence gates
- Planning your electric fence

The steps you will need to take to build your fence will vary with the type of fencing you have chosen to suit your needs. These instructions are meant to only serve as a guide to understand the basic concepts of building a fence. Consult with your **PR24** fencing expert for more detailed steps on building specific fencing types.



## Risk Management Consulting

People in companies and organizations often tend to define risks as threats – conditions, situations, and events – that could undermine the well-being and effectiveness of the organization. However, they lack a taxonomy of risks and a detailed compendium of these threats.

The lack of a common language of risk can create gaps and redundancies in Risk Management activities as well as unacknowledged risks, unallocated resources and Faulty Risk monitoring and reporting.

The resulting lack of clarity can lead to excessive risk aversion rather than risk management, and lost opportunities, and high costs.

The company continues to evolve with transacting in new and existing markets, with acquisitions adding to the portfolio of services.

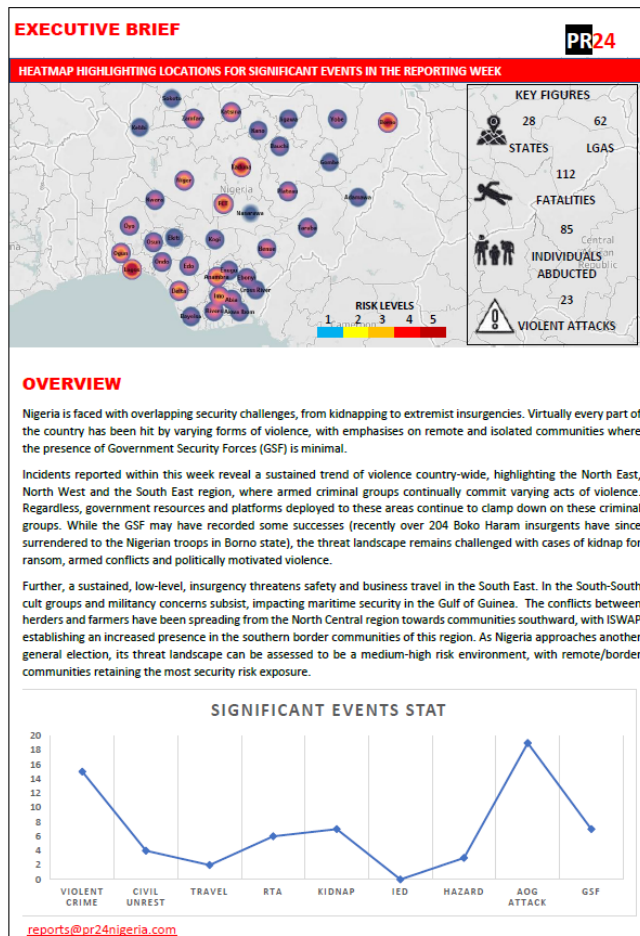
At **PR24**, we understand that risk is part of our lives. Our corporate mission is to go where the need is most and support your pursuit of 'value'. **PR24** specializes in providing security advisory, platforms, and industry-leading innovations that can help you effectively secure your people, assets, and corporate image.

Our approach involves understanding, analyzing, and addressing your business risks. Our focus is to help your organization build resilience, under focal goals and market objectives. At **PR24**, we believe risk mitigation must be proportionate to the complexity, type of organization involved, and situational context.

**PR24** advisory services cover the following areas:

- ✓ Political Risks
- ✓ Security Risks
- ✓ Market Risks\Integrity/People Risks
- ✓ Travel Risks/Journey Management
- ✓ Special Projects

Our unique combination of systems, right people, regional spread, and local knowledge means that we are rightly positioned to help you solve business problems and realize new opportunities.



WEEKLY SECURITY REPORT

## JOURNEY MANAGEMENT

Secure Mobility and secure transportation services is a key area of our expertise. Our highly-trained security personnel escort clients in vehicles equipped with radio and satellite communications systems, which enable our operations centers to track our clients' movements in real-time. In the event of an emergency, call our client movements to ensure a vehicle cross- over capability and Quick Reaction Force (QRF) support from our operations hubs across Nigeria. We deploy different profiles as dictated by the threat, intelligence gathered, client requirements, and the operating environment. **PR24** can provide our clients with a long term or ad-hoc solution, all depending on the length of the project and cost. Our teams have been highly trained to detect and prevent incidences. They are trained to advise the client about the high-risk areas and provide a solution if needed.

### Vehicle configurations

#### Recommended profile for travel in low-risk areas



Principle Vehicle

- x Security Driver
- x Commander CPO
- x clients in the passenger seat (up to four in the 7-seater vehicle)



Backing Vehicle (Chase)

- x Local Driver x CPO
- x Armed Mopol / SPU

#### Recommended profile for travel in higher-risk areas



Backing Vehicle (Lead)

- x Local Driver x CPO
- x Armed Mopol/SPU



Principle Vehicle

- x Local Driver
- x Commander CPO
- x Clients in the passenger seat (up to four 7- seater vehicle)



Backing Vehicle (Chase)

- x Local Driver x CPOs
- x Armed Mopol/SPU

We recommend a Principle Vehicle only during daylight hours in Lagos and Abuja and the addition of one (1) Backup Vehicle during night travel. In Port Harcourt and the rest of Nigeria, we recommend Principle with Backup Vehicle as a must. Vehicles configurations can change depending on the current security situation within a location, we will advise our clients accordingly. These vehicles are soft skin SUVs, carrying up to a maximum of two clients per vehicle. Each vehicle is manned by a local national Security Training Driver and CPO. In some instances, we may recommend the use of armed MOPOL operators and the use of an armored vehicle (AV) for movements that may occur during times of higher threat.

The movement authorization and profile will be in line with our:

- Standing operating procedures
- Current risk assessment and level of threat in the operating area
- Number of personnel traveling
- Origin and destination of the journey

### **Airports meet and greet services**

As part of our mobile security services we offer travelers an airport 'meet and greet' service to ensure travelers arriving in-country are comfortable. The airport process can be cumbersome; our protocol officer stationed at the airport is in place to fast track and facilitates all processes before the traveler, in saying this, one needs to understand that procedures often change at the airport. The protocol officer's primary job is to ensure our travelers arrive safely and transferred through the airport without harassment. This process is also offered for departure as the protocol officer will assist travelers with the check-in process.

### **Training services**






**PR24** understands the need for professional training within the security industry; therefore we bring in City & Guilds accredited trainers to give our staff high-quality Driver and Commander training. We also use our expatriate expertise in-country to pass down knowledge to our invaluable staff.

Before any driver is deployed for official **PR24** duty they run through a series of tests that need to be passed. Our drivers and commanders are trained to detect security threats and act accordingly; they are also put through a basic First Aid course which comes in handy for roadside accidents. All personnel deployed on our projects meet our standard level of training and certification requirements.

### Provision of Police/Mopol Services for Static Guarding

In certain cases, we do provide Nigerian Police/Mopol for armed protection at the client's offices or residences. These activities will already be subject to security approval and review by the Divisional Police Officer (DPO). We have approval from the Nigeria Police Force for the use of these armed policemen.

### Journey Management Costing

Picture of Vehicles	Description of Vehicles
	Toyota Prado including Driver and Commander (2014-2016)
	Toyota Land cruiser including Driver and Commander (2014-2016)
	Lexus Land cruiser including Driver and Commander (2015)



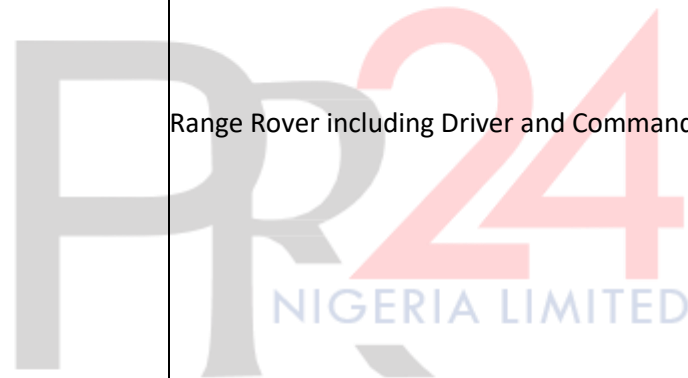
Mercedes Benz G Wagon including Driver and Commander (2014-2015)



Range Rover including Driver and Commander (2014-2015)



Toyota Sequoia including Driver and Commander (2014-2015)







B6 Armored – Chevrolet Suburban (5 Seater) including Driver and Commander (2014)



B6 Armored – Toyota Land Cruiser VXR (4 Seater) including Driver and Commander (2013)



Mercedes Benz Viano (6 Seater) including Driver and Commander (2014-2015)





Toyota Hiace Mini Bus (18 Seater) including Driver and Commander (2014-2015)



Toyota Coaster (30 Seater) including Driver and Commander (2014-2015)



Toyota Hilux including Driver, Commander, 2x Armed Mopol and Fuel (2012-2014)





Quick Response Team

### Secure Mobility-Pricing Notes

- All pricing excludes VAT which will be invoiced at 5%
- All pricing is done in Nigerian Naira Currency
- Vehicles with full day pricing only do not cover special rates for Pickup & Drop off
- All vehicles are kitted with the following
  - ❖ Mifi Device for internet connectivity
  - ❖ Snack Pack for a client
  - ❖ Refreshments in a cooler bag (2x Water, 2x Cool drinks e.g. Coke or Fanta)
  - ❖ First Aid Kit
  - ❖ Torchlight
  - ❖ Jumping cables
  - ❖ Fire Extinguisher

Description	Qty
Nigerian Police/Mopol men per month	1

### Nigerian Police/Mopol – Pricing Notes

- All Pricing excludes VAT which will be invoiced at 5%
- All pricing is done in Nigerian Naira Currency
- We will require 24-hour notice for the deployment of Police/Mopol
- The client will provide suitable toilet facilities for the men while on duty, and drinking water

## OUTSOURCED DRIVERS

At **PR24 NIGERIA LIMITED**, we understand how difficult it can be to get reliable and professional drivers. This is why we ensure that our drivers are thoroughly selected to take the pressure off you.

We provide driver support (outsourcing) services to organizations to reduce the cost (financial and time) associated with managing their pool of drivers; we specialize in outsourcing only experienced and reliable drivers for individual and corporate purposes.

### Drivers Training Service

Safety is our top priority. This is why we offer quality drivers training services to ensure our drivers are highly proficient and trained. Our training programs are designed to ensure that our vetted and professional drivers drive you in comfort while also bearing safety in mind.

We have put together various capacity-building programs designed to ensure that your drivers/dispatch riders attain the levels of proficiency that guarantee the safety and security of your vehicle fleet and also the comfort of whoever they are assigned to.

### Some benefits to your organization:

- Your organization will benefit from a lot of cost savings as you will no longer provide administrative responsibilities such as medical, pension for this category of staff.
- Drivers under our management regularly undergo periodical training and retraining in driving techniques, safety habits, and first aid awareness to ensure that they constantly update their knowledge and apply the best safety procedures constantly.
- Savings in the cost of recruitment and placement. We also provide temporary drivers at a greatly discounted value.
- Work continuity is guaranteed as every driver proceeding on leave (annual or casual), would be promptly relieved by an equally competent and to be provided from our pool of tested personnel.

## TRACKING & TELEMATICS

PR24 collaborates with HIC Telematics in the provision of location-based services.

HIC Telematics is a specialist technology developer and provider of tracking systems, Alarm monitoring devices, and remote asset tracking solutions (Generator monitoring inclusive). In partnership with over 7 hardware engineering partners and a combined experience of over 200 years in AVL operations across different continents, HIC can offer its client the best in class solutions and engineer purpose-built systems in some instances.

We offer unparalleled solution engineering capability in West Africa and our board-certified engineers provide excellent technical support. All our systems are integrated into our C4i tracking and management platform, HICTRACK.

Hic-Track is a secured (256Bit AES), cloud-based fleet monitoring and management software that can help clients locate, communicate, and manage their fleet efficiently. Our full-featured In-vehicle-monitoring-systems (IVMS) can also help guarantee improved returns on investment increase the life span of your vehicle and cut wastage by 30% and better secure your asset

HIC's clientele includes governments and NGOs, oil and gas companies, logistic companies, private security firms, maritime users, vehicle manufacturers, and fleet operators, with hundreds of devices having been deployed. HIC has long-standing agreements in place with a wide range of international equipment and airtime suppliers and is a regional representative for Triadis and a Value-Added Reseller for Albatross and Iridium.

HIC boasts an impressive suite of IVMS solutions in Nigeria and with several clients in West Africa. Recently a vehicle was stolen in the South-Eastern part of the country from one of our existing clients. The driver activated the panic switch before being abandoned at the side of the road. By using Hic-Track, the client was able to recover both the driver and vehicle within 3 hours of the incident, somewhere near the North East of Nigeria. Such innovation is the result of our company's commitment to raising the bar of solutions engineering and continuous product development.

### **ADVANCED GENERATOR MONITORING AND CONTROL**

Our GTS series is designed to be deployed on generators ranging from 10KVA to over 3MWs. HIC's advanced generator monitoring and control solution allows fleet operators to reduce their operating costs by up to 55 percent in some cases.

To monitor a remote generator (or other machines such as compressors or chillers) a small, ultra-low power, remote telemetry unit is installed inside the generator's housing. The unit collects data from the generator and its fuel tanks; transmitting it back to a central control room via our secure C4i platform. The generator's performance data is collected, either through a direct connection to a control panel or via external contacts.



We understand that your fuel is at constant risk of theft and fraud when operating generators or other types of machines at remote sites. Our tailored solutions with its class-leading fuel management module provide you with a wealth of information to help streamline and protect your fuel management operation.

Some of the features/benefits of our systems include:

- Get real-time and actual fuel level monitoring reports
- Forecast refuel date
- Confirm actual fuel delivery reports and combat supply chain fraud
- Easy invoice reconciliation with diesel vendor
- Get fuel theft or leakage detection alerts via SMS or email
- Enjoy useful insights from telemetric analysis
- Geo-fence your asset's fixed location and get exception alerts
- Know when doors & hatches are open
- You get less than 1 percent error margin in fuel level sensing, with fourteen months' quality warranty.

## ROCCO S4 ALARM SECURITY SYSTEM

Rocco-S4 is a wireless security alarm to stationary objects (apartments, houses, warehouses, garages, etc.). All system components such as the control panel, Keyboard, motion detectors do not require cable connections so the installation of an alarm does not affect the aesthetics of the object and can be implemented without the installation company equipped with special tools.



The system will be turned off using the keyboard, remote control, or mobile phone. All alarm events or control is sent to mobile phone numbers via SMS. The Rocco-S4 features high flexibility in configuration and further expansion. It is ideal for rooms that are not directly interconnected like a condominium - cellar or office/ Warehouse.

Programming the system via mobile phones will allow you to remotely configure the rules of the system at any time and regardless of the place in which it is the owner.

### Basic System Features

- ❖ Simple and fast installation without interfering with the building;
- ❖ The individual components do not require cable connections. The installation does not affect the aesthetics of the building.
- ❖ The control panel assembles into any 230V power socket-turning on/ off system is carried out using a keyboard, remote control, or mobile phone.
- ❖ The system can connect up to 8 wireless detectors, motion, contact – sensors, and sends alarm information to the user's mobile phone (e.g. the owner, technician or ARC, etc.).
- ❖ The system monitors the battery status keyboard, motion detectors, remote controls and transmits mobile phone information to replace the battery
- ❖ It allows for the continuous supervision of a facility 24 hours a day from anywhere in the world - low operating costs.
- ❖ The system can be quickly disassembled and installed in a different place.
- ❖ Users can remotely check whether the alarm system is switched on
- ❖ Users can also remotely check the entry and exit time of domestic staff

## FIRE SECURITY SYSTEMS

1. Fire Alarm & Detection System
2. Automatic Fire Suppression Systems

### Fire Alarm & Detection System

A key aspect of fire protection is to identify a developing fire emergency promptly and to alert the building's occupants and fire emergency organizations.



This is the role of fire detection and alarm systems. Depending on the anticipated fire scenario, building and use type, number, and type of occupants, and criticality of contents and mission, these systems can provide several

main functions. First, they provide a means to identify a developing fire through either manual or automatic methods, and second, they alert building occupants to a fire condition and the need to evacuate.

Another common function is the transmission of an alarm notification signal to the fire department or other emergency response organizations. They may also shut down electrical, air handling equipment, or special process operations, and they may be used to initiate automatic suppression systems. This describes the basic aspects of fire detection and alarm systems.

### **Automatic Fire Suppression System**

**Cost-Effective Protection for High-Value Assets** High-value assets such as data and sensitive equipment demand the quality fire suppression offered by the PR24 FM-200 Fire Suppression System.

The FM-200 system is ideal for areas occupied by personnel and containing assets that could be damaged by water. The low concentration of agent required and low toxicity means less visual obscuration and minimal risk to people.

The system fights Class A, B, and C fires with a clean agent that is electrically nonconductive and will not short-out electronic equipment or thermally shock delicate circuitry. The colorless, odorless gas leaves no residue, eliminating post-fire agent cleanup and minimizing downtime.

Both automatic and manual actuators are available for the release of the agent into the hazard area through fixed piping and nozzles. Each nozzle is sized to ensure the correct flow of agent for the hazard and available in seven sizes with seven or eight ports for either 180 or 360-degree horizontal discharge patterns respectively.

For large hazards, agent containers can be connected to a common manifold. Approvals and Standards for the FM-200 system include Factory Mutual (FM); Underwriters Laboratories, Inc. (UL); Underwriters Laboratories of Canada (ULC); NFPA 2001: Clean Agent Fire Extinguishing Systems; ISO-14520: Gaseous Fire Extinguishing Systems; EPA SNAP Report and MEA.

### **CRIME PREVENTION AND ENVIRONMENTAL DESIGN ADVISORY**

Security design and access control are more than bars on windows, a security guard booth, a camera, or a wall. Crime prevention involves the systematic integration of design, technology, and operation for the protection of three critical assets-people, information, and property. The protection of these assets is a concern and should be considered throughout the design and construction process.

The most efficient, least expensive way to provide security is during the design process. Designers who are called on to address security and crime concerns must be able to determine security requirements, must know security technology, and must understand the architectural implications of security needs.

The process of designing security into architecture is known as "crime prevention through environmental design" (CPTED). It involves designing the built environment to reduce the opportunity for, and fear of, stranger-to-stranger predatory crime. This approach to security design is different from traditional crime prevention practice, which focuses on denying access to a crime target with barrier techniques, such as locks, alarms, fences, and gates. CPTED takes advantage of opportunities for natural access control, surveillance, and territorial reinforcement. Natural and normal uses of the environment can meet the same security goals as physical and technical protection methods.

CPTED strategies are implemented by:

- Electronic methods: Electronic access and intrusion detection, electronic surveillance, electronic detection, and alarm and electronic monitoring and control
- Architectural methods: Architectural design and layout, site planning and landscaping, signage, and circulation control
- Organizational methods: Manpower, police, security guards, and neighborhood watch programs



## EVENT AND SPECIAL PROJECT SECURITY

**PR24 NIGERIA LIMITED** event security management services are designed to suit the specific requirements of our clients. We can provide security services during special events of any nature and scope, and this includes conferences, seminars, wedding ceremonies, board meetings, promotional activities, sporting events, and music festivals.

We design and implement security systems customized for a particular event regarding access control, crowd control, executive protection, emergency contingency planning, etc. Its success is centered on the seamless integration of **PR24** and the authorities, and the consequent reduction in costs for the police.

Our event officers are required to undergo extensive training in crowd control tactics that avoid liability and litigation. At all times **PR24** maintains the highest possible level of discretion and confidentiality. We have the experience, and expertise to partner with your event staff to ensure a safe and successful event.

We also deploy event security managers or security coordinators to provide support, as well as ensure effective coordination and liaison with relevant individuals and agencies during special events.



## PR24 NATIONAL FOOTPRINT

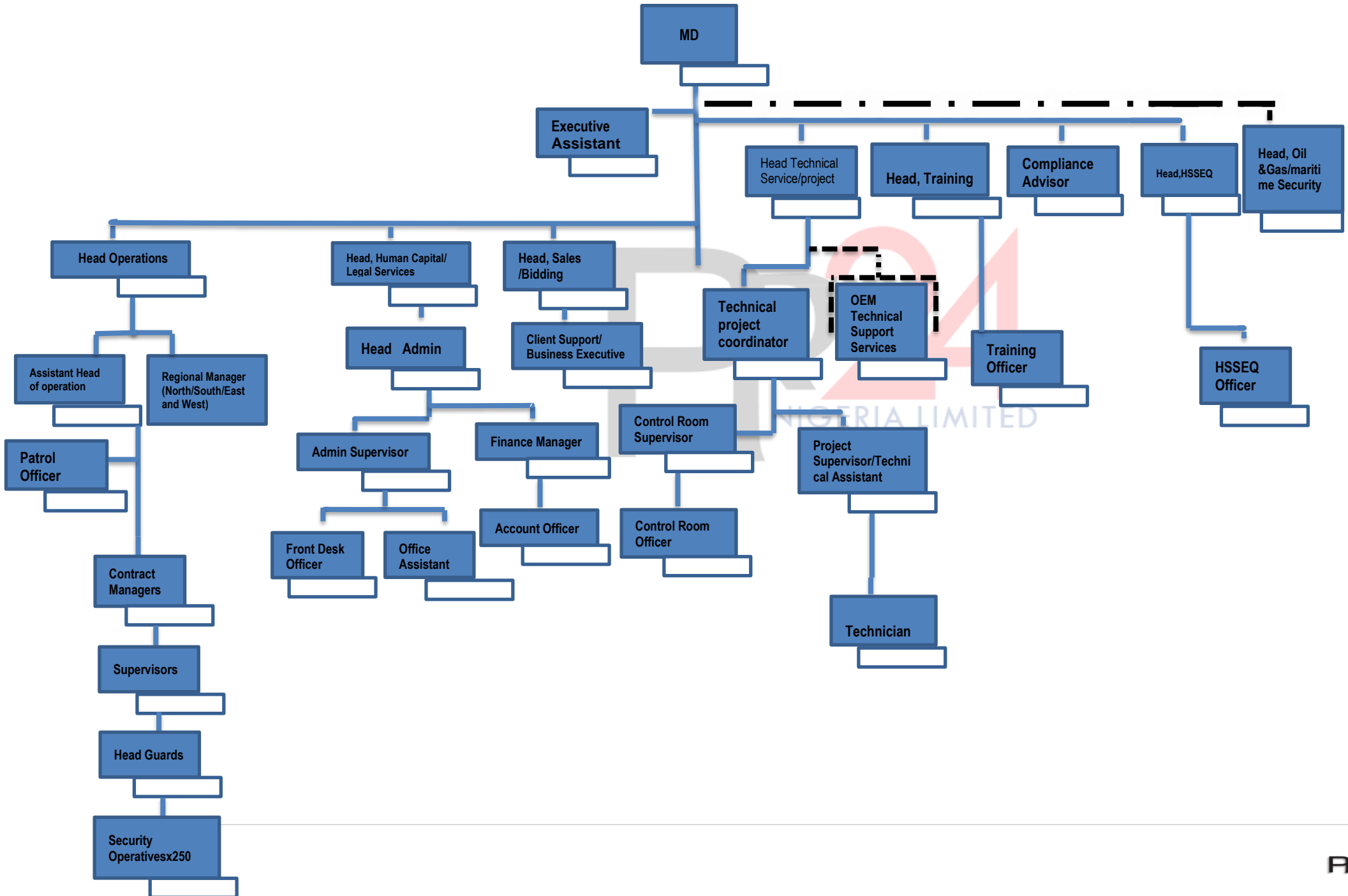
**PR24 Nigeria Limited** as a Nigerian indigenous company that provides risk management and security services to the organization has been working closely with clients in our diverse field of services provision. Our Head office is located at 6 Olatunde Ayoola Avenue, Anthony Village Lagos. We have five (5) regional offices at Abuja/Kaduna/Maiduguri/Port-Harcourt/Ibadan.



📍 Head office Location  
📍 Operational Sites

DESCRIPTION	ADDRESS	PHONE NUMBERS	EMAIL ADDRESS
HEAD OFFICE	6 Olatunde Ayoola Avenue Obanikoro Anthony Lagos State	08028774774	<a href="mailto:info@pr24nigeria.com">info@pr24nigeria.com</a> , <a href="http://www.pr24security.com">www.pr24security.com</a>
REGIONAL OFFICES	H6, C Close23 Crescent, Efaab City Estate Life Camp, Abuja <a href="https://g.co/kgs/NCrmwu">https://g.co/kgs/NCrmwu</a>	08103491027	
	7 Mobutu Road Post Office Junction High-Cost Narayi Kaduna State	08028774774	
	38 Bama Road New GRA Maiduguri Borno state.	08028774774 08067696166	
	KM5, East-West Road, Port Harcourt, Rivers State	08038976278	
	His Grace Shopping Complex Fatimo Busstop Opposite our Lady of Apostle Secondary School Odo- Ona Apata Ibadan	08028774774	

## PR24 NIGERIA LIMITED ORGANOGRAM





## CLIENT BASE

**PR24 NIGERIA LIMITED** is currently providing Services in Abuja, Rivers, Enugu, Lagos, Oyo, Borno, Yobe, Adamawa, Kaduna, Makurdi and Imo states respectively, monitoring and protecting life and assets, and bringing peace of mind to the communities where our clients live and work.

The services provided for our existing clients include but not limited to the following:

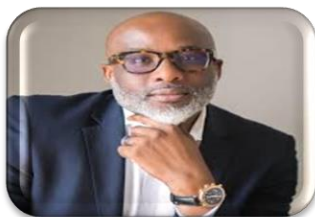
- Physical Security (Private Guards, Aperture Fence, Active or Passive Fence Barriers)
- CPTED review for New, Ongoing, or Existing Projects
- Risk Assessment, Security Survey and Systems Audit
- Extra-low Voltage Security & Access Control Systems(Surveillance Systems, Turnstiles)
- Fire Suppression Systems ( FM200, Fire Alarm Panels, and Complimentary Kits)
- Intrusion Detection Systems
- Training, Investigations, and Due Diligence Check

Our company is the first choice of many security-conscious organizations, businessmen, and high-profile figures. We currently have about 78 existing clients we render services to.



## BOARD OF DIRECTORS

Our People



**LANRE OLUSOLA**  
(Chairman)



**ONYEKACHI ADEKOYA**  
(Managing Director)



**PETER OKOLOH**  
(Executive Vice  
Chairman)



**INNOCENT OSEGHE**  
(Non-executive  
director)



**ISAAC OROLUGBAGBE**  
FCA (INED)



**ADEMOLA OYERINDE**  
(Non-Executive  
Director)



**DR. ABAYOMI AJAYI**  
(Non-Executive  
Director)

6, Olatunde Ayoola Avenue,  
Anthony, Lagos State.  
Email: [info@pr24nigeria.com](mailto:info@pr24nigeria.com)  
Website: [www.pr24security.com](http://www.pr24security.com)



## TECHNICAL PARTNERS

